



BEVERAGE CATALOG



**Hose For Every Service
Since 1932**



Connoisseurs Suction & Discharge Hose

Construction: Tube: White Chlorobutyl. Cover: Grey EPDM abrasion resistant. Reinforcement: Multiple plies of polyester tire cord & dual monofilament helix.

THE NOVA FLEX GROUP
Temperature: -40°F to 248°F
Sizes: 1" - 4"



Hose Inside Dia. (in.)	Max. Pressure (psi)	Bulk Hose
1	250	NF-6506-100
1-1/2	250	NF-6506-150
2	250	NF-6506-200

Extremeflex Beverage Red with EZ Clean Cover

Construction: Tube: White Chlorobutyl (FDA/USDA compliant and conforms to 3-A Sanitary Standard 18-03), non-phthalates compound. Cover: Wide corrugated, red, low friction material, abrasion, ozone, ageing, oil and chemical resistant, easy to clean. Reinforcement: Spiral-plyed fabrics with double galvanized helix wire.

Continental
Temperature: -30°F to 220°F
Sizes: 1" - 4"

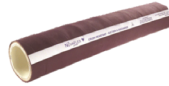


Hose Inside Dia. (in.)	Max. Pressure (psi)	Bulk Hose
1	250	EXBR100
1-1/2	250	EXBR150
2	200	EXBR200

Novabrew

Construction: Tube: White Chlorobutyl (FDA/USDA compliant and conforms to 3-A Sanitary Standard 18-03). Cover: Dark burgundy EPDM. Reinforcement: Multiple plies of polyester tire cord and dual monofilament helix rods.

THE NOVA FLEX GROUP
Temperature: -40°F to 248°F
Sizes: 3/4" - 4"



Hose Inside Dia. (in.)	Max. Pressure (psi)	Bulk Hose
1	250	NF-6507-100
1-1/2	250	NF-6507-150
2		NF-6507-200

Vintner Reserve

Construction: Tube: White Chlorobutyl (FDA/USDA compliant and conforms to 3-A Sanitary Standard 18-03). Cover: Gray EPDM. Reinforcement: Multiple plies of polyester tire cord and dual monofilament helix rods.

Continental
Temperature: 30°F to 220°F
Sizes: 1" - 3"



Hose Inside Dia. (in.)	Max. Pressure (psi)	Bulk Hose
1	250	VNT100
1-1/2	250	VNT150
2	250	VNT200

Growler Brewery Hose

Construction: Tube: White, BIIR (BUTYL). Cover: Orange EPDM reinforced with high strength synthetic plies with steel wire spirals.

TEXCEL
Temperature: -40°F to 248°F
Sizes: 3/4" - 4"



Hose Inside Dia. (in.)	Max. Pressure (psi)	Bulk Hose
1	150	GRLR100
1-1/2	150	GRLR150
2	150	GRLR200

Vintner Lite Reserve

Construction: Tube: White Chlorobutyl (FDA/USDA compliant and conforms to 3-A Sanitary Standard 18-03). Cover: Gray EPDM. Reinforcement: Multiple plies of polyester tire cord and dual monofilament helix rods.

Continental
Temperature: 30°F to 220°F
Sizes: 1" - 3"



Hose Inside Dia. (in.)	Max. Pressure (psi)	Bulk Hose
1	150	VNTL100(400min)
1-1/2	150	VNTL150
2	150	VNTL200(400min)

BREW T

Construction: Tube: White Chlorobutyl. Cover: Red EPDM abrasion resistant. Reinforcement: Wire.

Kuriyama /Alfagomma®
Temperature: -22°F to +226°F
Sizes: 1" - 4"



Hose Inside Dia. (in.)	Max. Pressure (psi)	Bulk Hose
1"	150	BRWT-100
1-1/2"	150	BRWT-150
2"	150	BRWT-200

Drinkline

Construction: Tube: White EPDM. Cover: Red EPDM abrasion resistant. Reinforcement: Multiple plies of polyester.

Continental
Temperature: -40°F to +220°F
Sizes: 3/4" - 4"

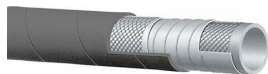


Hose Inside Dia. (in.)	Max. Pressure (psi)	Bulk Hose
1-1/2	250	DNK150
2"	250	DNK200(400min)

KT410LB (Evolution Brew Hose) **NEW**

Construction: Tube: White Chlorobutyl. Cover: Gray EPDM abrasion-Kink and Crush Resistant

Kuriyama /Alfagomma®
Temperature: -22°F to +226°F
Sizes: 1" - 2"



Hose Inside Dia. (in.)	Max. Pressure (psi)	Bulk Hose
1"	240	KT410LB-100
1-1/2"	240	KT410LB-150
2"	240	KT410LB-200

Fitting Options



DIN FITTINGS	Crimped Tri-Clamp piece attached set with bumper	Crimped Tri-Clamp One Piece attached set
1"	1"	1"
1-1/2"	1-1/2"	1-1/2"
2"	2"	2"

Drinkline

Construction: Tube: White EPDM. Cover: Red EPDM abrasion resistant. Reinforcement: Multiple plies of polyester.



Temperature: -40°F to +220°F

Sizes: 3/4" - 4"

Hose Inside Dia. (in.)	Max. Pressure (psi)	Bulk Hose
1-1/2	250	DNK150
2"	250	DNK200

Vintner Reserve

Construction: Tube: White Chlorobutyl (FDA/USDA compliant and conforms to 3-A Sanitary Standard 18-03). Cover: Gray EPDM. Reinforcement: Multiple plies of polyester tire cord and dual monofilament helix rods.



Temperature: 30°F to 220°F

Sizes: 1" - 3"

Hose Inside Dia. (in.)	Max. Pressure (psi)	Bulk Hose
1	250	VNT100
1-1/2	250	VNT150
2	250	VNT200

Vintner Lite Reserve

Construction: Tube: White Chlorobutyl (FDA/USDA compliant and conforms to 3-A Sanitary Standard 18-03). Cover: Gray EPDM. Reinforcement: Multiple plies of polyester tire cord and dual monofilament helix rods.



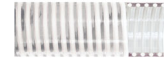
Temperature: 30°F to 220°F

Sizes: 1" - 3"

Hose Inside Dia. (in.)	Max. Pressure (psi)	Bulk Hose
1	150	VNTL100(400min)
1-1/2	150	VNTL150
2	150	VNTL200(400min)

PVC Clear Standard Suction Hose

Construction: Clear PVC with white helix. Smooth wall and interior.



Temperature: -10°F to 130°F

Sizes: 1" - 2"

Hose Inside Dia. (in.)	Max. Pressure (psi)	Bulk Hose
1	90	SPT100
1-1/2	90	SPT150
2	70	SPT200

WSTF Beverage Transfer Hose

Construction: Double-ply PVC tube, polyester fabric reinforcement and rigid PVC helix.



Temperature: -4°F to 150°F

Sizes: 1 1/2" - 6"

Hose Inside Dia. (in.)	Max. Pressure (psi)	Bulk Hose
1-1/2	110	VBT150
2	100	WSTF200
3	100	WSTF300
4	75	WSTF400

Heavy-Duty Flexible PVC Hose

Construction: Clear Pliovic® PVC (FDA, 3-A, USDA compliant), NSF-61 tube. Clear Pliovic® cover. Clear high-density Pliovic® helix reinforcement.



Temperature: -15°F to 158°F

Sizes: 1 1/2" - 4"

Hose Inside Dia. (in.)	Max. Pressure (psi)	Bulk Hose
1		WT100
1-1/2		WT150
2		WT200

Fitting Options



Male Din Fitting	Female Din Fitting with nut
1	1
1-1/2	1-1/2
2	2

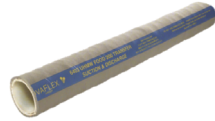
Crimped Tri-Clamp piece attached set	Crimped Tri-Clamp One Piece attached set	Crimped Tri-Clamp 90 or 45 Deg. One Piece attached EACH
1"	1"	1"
1-1/2"	1-1/2"	1-1/2"
2"	2"	2"

Sold Per Each Only

We offer a wide variety of beverage transfer hoses to fit your individual needs. Any of these hoses can be sold in bulk or assembled with the fitting combinations below.

UHMW Tube and smooth EPDM Cover

Construction: Tube: FDA UHMW- odor and tasteless. Cover: Grey EPDM. Reinforcement: Multiple plies of polyester tire cord with helix wire.



Temperature: -40°F to 225°F
Sizes: 1" - 4"

Hose Inside Dia. (in.)	Max. Pressure (psi)	Bulk Hose
1	200	NF-6403-100
1-1/2	200	NF-6403-150
2	200	NF-6403-200

FDA Steam (STEAM FITTINGS REQUIRED)

Construction: Tube: White EPDM. Meets FDA and 3A (18-03) requirements. Cover: White EPDM- Heat, Abrasion and Ozone resistant. Reinforcement: High tensile textile cords.



Temperature: -40°F to 248°F
Sizes: 1/2" - 1"

Hose Inside Dia. (in.)	Max. Pressure (psi)	Bulk Hose
1/2"	225	T350LL050
3/4"	225	T350LL075

PVC Clear Standard Suction Hose

Construction: Clear PVC with white helix. Smooth wall and interior.



Temperature: -10°F to 130°F
Sizes: 1" - 2"

Hose Inside Dia. (in.)	Max. Pressure (psi)	Bulk Hose
1	90	SPT100
1-1/2	90	SPT150
2	70	SPT200

WSTF Beverage Transfer Hose

Construction: Double-ply PVC tube, polyester fabric reinforcement and rigid PVC helix.



Temperature: -4°F to 150°F
Sizes: 1 1/2" - 6"

Hose Inside Dia. (in.)	Max. Pressure (psi)	Bulk Hose
1-1/2	110	VBT150
2	100	WSTF200
3	100	WSTF300
4	75	WSTF400

Heavy-Duty Flexible PVC Hose

Construction: Clear Pliovic® PVC (FDA, 3-A, USDA compliant), NSF-61 tube. Clear Pliovic® cover. Clear high-density Pliovic® helix reinforcement.



Temperature: -15°F to 158°F
Sizes: 1 1/2" - 4"

Hose Inside Dia. (in.)	Max. Pressure (psi)	Bulk Hose
1-1/2		WT150
2		WT200

Fitting Options



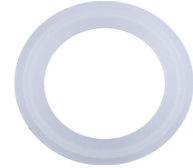
Male Din Fitting	Female Din Fitting with nut
1	1
1-1/2	1-1/2
2	2

Crimped Tri-Clamp piece attached set	Crimped Tri-Clamp One Piece attached set	Crimped Tri-Clamp 90 or 45 Deg. One Piece attached EACH
2	1	1
1-1/2	1-1/2	1-1/2
2	2	2

Sold Per Each Only

Gaskets

Size (in.)	Description	EPDM	E-FLNG
1	1" Tri-Clamp Gasket	TC-40MPE-1	TC-40MPF-1
1-1/2	1-1/2" Tri-Clamp Gasket	TC-40MPE-15	TC-40MPF-15
2	2" Tri-Clamp Gasket	TC-40MPE-2	TC-40MPF-2



Clamps

Size (in.)	Description	Part Number
1-1/2	1" & 1-1/2" Single Pin Clamp	TC-13MHMM-150
2	2" Single Pin Clamp	TC-13MHMM-200
1-1/2	1" & 1-1/2" Spring Clamp	TC-13MHMM-Q150
2	2" Spring Clamp	TC-13MHMM-Q200



Barbed Sanitary Adapters

Size (in.)	Description	Rubber Hose	Brewery Hose
1	Stainless Steel Barbed Adapters		TC-14MPHRL-100
1-1/2	Stainless Steel Barbed Adapters		TC-14MPHRL-150
2	Stainless Steel Barbed Adapters		TC-14MPHRL-200



Threaded Sanitary Adapters

Size (in.)	Description	Male NPT	Female NPT
1	Stainless Steel Threaded Adapters	C421MP-1	C422MP-1
1-1/2	Stainless Steel Threaded Adapters	C421MP-15	C422MP-15
2	Stainless Steel Threaded Adapters	C421MP-2	C422MP-2



* Additional jump sizes available

Butterfly Valves

Material: 316L forged stainless steel body and disc

Seat Options: Silicone, EPDM, FKM

Low resistance to flow

Bi-directional flow

Polyacetal bushings for the valve disc for reduced friction and increased life cycle

All wetted surfaces are sanitary finished to <= 32R

Repair kits available

Size (in.)	Description	Part #	
1 / 1-1/2	1& 1-1/2" SS Butterfly Valve EPDM seat	BFV150-EPDM	Pull Handle
2	2" SS Butterfly Valve EPDM seat	BFV200-EPDM	Pull Handle
1 / 1-1/2	1& 1-1/2" SS Butterfly Valve EPDM seat	BFV150-EPDM	Trigger Handle
2	2" SS Butterfly Valve EPDM seat	BFV200-EPDM	Trigger Handle





T-Bolt Clamps, Band clamps and Tools

T-Bolt Clamps

Part Number	Description	Fits Hose	
30050-0131-051	1" Hose i.d T-Bolt Clamp	WINE100	SPT100
30050-0150-051	1" Hose i.d T-Bolt Clamp	EXBR100	GRLR100
		ELIX100	NF-6403-100
30050-0175-051	1" Hose i.d T-Bolt Clamp	WINE125	NF-6507-100
		NF-6506-100	VNT100
30050-0188-051	1-1/2" Hose i.d T-Bolt Clamp	SPT150	
30050-0200-051	1-1/2" Hose i.d. T-Bolt Clamp	EXBR150	GRLR150
		ELIX150	WT150
		WSTF150	
30050-0225-051	1-1/2" Hose i.d T-Bolt Clamp	EXBW150	NF-6507-150
		NF-6506-150	NF-6403-150
		VNT150	
30050-0256-051	2" Hose i.d. T-Bolt Clamp	EXBR200	NF-6403-200
		WT200	SPT200
30050-0263-051	2" Hose i.d. T-Bolt Clamp	EXBW200	GRLR200
		WINE200	ELIX200
		WSTF200	
30050-0288-051	2" Hose i.d. T-Bolt Clamp	NF-6507-200	NF-6506-200
		VNT200	
30050-0375-051	3" Hose i.d. T-Bolt Clamp	WSTF300	
30050-0475-051	4" Hose i.d. T-Bolt Clamp	WSTF400	



Banding Tool

Part Number	Description		
CP-T300	Center Punch Banding Tool		



Center Punch Bands

Part Number	Description	Fits Hose	
BAND-CP07	1" Hose i.d. Punch Lock Band	WINE100	SPT100
BAND-CP08	1" Hose i.d. Punch Lock Band	EXBR100	GRLR100
		ELIX100	NF-6506-100
		NF-6507-100	NF-6403-100
BAND-CP10	1-1/2" Hose i.d. Punch Lock Band	GRLR150	WINE125
		EXBW150	EXBR150
		ELIX150	NF-6506-150
		NF-6507-150	NF-6403-150
		WT150	WSTF150
		SPT150	SPT200
BAND-CP12	2" Hose i.d. Punch Lock Band	EXBW200	EXBR200
		GRLR200	WINE200
		ELIX200	NF-6506-200
		NF-6507-200	NF-6403-200
		WT200	WSTF200
BAND-CP16	3" Hose i.d. Punch Lock Band	WSTF300	
BAND-CP20	4" Hose i.d. Punch Lock Band	WSTF400	



Silicone

Construction: Raw materials meet FDA requirements per FDA 21 CFR 177.2600 for use with food contact surfaces.

Temperature: -100°F to 500°F (350°F max for NSF applications)

Sizes: 1/16" - 3/4"



Hose Inside Dia. (in.)	Max. Pressure (psi)	Bulk Tubing
3/8	10	2802009
1/2	10	2802471
3/4	10	2803087



Clear PVC Tubing

Construction: Clear PVC tube

Temperature: - 10°F to 130°F

Sizes: 1/8" - 2"

Phalate Free

Hose Inside Dia. (in.)	Max. Pressure (psi)	Bulk Tubing
3/8	45	TPVC-0601
1/2	30	TPVC-0801
3/4	35	TPVC-1202
1	25	TPVC-1602



Reinforced PVC Tubing

Construction: Crystal clear PVC compound, formulated with ingredients in compliance with applicable FDA(03) requirements. Reinforced with spiraled polyester yarn and longitudinal orange tracer yarns for identification.

Temperature: 25°F to 150°F

Sizes: 1/4" - 2"

Phalate Free

Hose Inside Dia. (in.)	Max. Pressure (psi)	Bulk Tubing
3/8/2024	200	TRPVC-06
1/2	200	TRPVC-08
3/4	150	TRPVC-12
1	125	TRPVC-16
1-1/4	100	TRPVC-20
1-1/2	75	TRPVC-24



Don't see what you need? Give us a call and we can get it for you!

For pricing and availability call us at 630-607-1900

Sani-Wash™ 300

Construction: EPDM synthetic rubber tube, White EPDM synthetic rubber cover with a textile reinforcement.



Temperature: -40°F to 200°F
Sizes: 1/2" - 1"

Hose Inside Dia. (in.)	Max. Pressure (psi)	Bulk Hose	Coupling Options
1/2	300	CRX050	Brass GHT, Stainless
3/4	300	CRX075	Steal/Brass GHT, Swivels, Nozzles
1	300	CRX100	



Fortress Washdown

Construction: Black nitrile synthetic rubber tube. Cover is a Yellow Carbyn™ synthetic rubber, RMA Class A (High Oil Resistance) with Microban product protection. Reinforcement is spiral synthetic yarn.



Temperature: -20°F to 200°F
Sizes: 1/2" - 1"

Hose Inside Dia. (in.)	Max. Pressure (psi)	Bulk Hose	Coupling Options
1/2	300	FRT050	Brass GHT, Stainless
3/4	300	FRT075	Steal/Brass GHT, Swivels, Nozzles



Blue Fortress Washdown

Construction: White nitrile synthetic rubber tube. Cover is a Blue Carbyn™ synthetic rubber, RMA Class A (High Oil Resistance) with Microban product protection. Reinforcement is spiral synthetic yarn.

Temperature: -20°F to 200°F
Sizes: 1/2" - 1"

Hose Inside Dia. (in.)	Max. Pressure (psi)	Bulk Hose	Coupling Options
1/2"	300	FRTB050	Brass GHT, Stainless
3/4	300	FRTB075	Steal/Brass GHT, Swivels, Nozzles
1"	300	FRTB100	



Other Products Available Upon Request ** Stocked Locally **

Stainless Steel Gauges



Custom Sanitary Gaskets



Nozzles

Size (in.)	Description	Part Number
1/2"	Brass Nozzle with White Cover	SK-150B-W
1/2"	Stainless Steel Nozzle with White Cover	SK-150S-W
3/8"	Brass Nozzle Blue or White Cover (Lite)	SK-150B-WLT
1/2"	Composite Nozzle with Blue with lock	SK-DH150-B



Other color options available

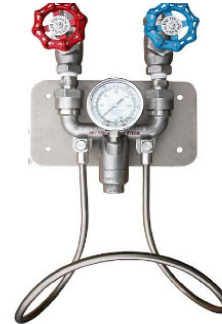
Swivel Adapter

Size (in.)	Description	Part Number
1/2"	1/2" Barb X 1/2" MNPT SS/Brass Swivel	SK-8-1/2-B
1/2"	1/2" Barb X 1/2" MNPT SS/Brass Swivel Ball Type	SK-8-B1/2-B
3/4"	3/4" Barb X 1/2" MNPT SS Swivel	SK-8-3/4-B
3/4"	3/4" Barb X 1/2" MNPT SS Swivel Ball Type	SK-8-B3/4-S
3/4"	3/4" Barb X 3/8" MNPT SS Swivel (For Mini Nozz)	SK-8LT-3/4-B
3/4"	1/2" MNPT Swivel Brass Hose Guard	SK-HG-3/4-B
3/4"	1/2" MNPT Swivel SS Hose Guard	SK-HG-3/4-S



Mixing Stations

Mixer Body	Description	Type	Part Number
Brass	Mixing unit w/ globe or ball valve	Hot & Cold	3600-M-B-T
	temp.gauge and check vavle		3600B-M-B-T



Medium Duty Spring Retractable Reels

Reelcraft's Series RT is an economical choice for a medium duty, lighter-weight, spring retractable hose reel for applications that are less demanding, yet require a product that can withstand industrial and commercial use. The industrial-grade drive spring is protected from the environment in a polypropylene spool for longer service life. Guide arm adjusts to seven positions.



Full flow stress free swivel design - The full flow swivel combines the highest grade seal design and materials with bearing areas to insure maximum service life. The hose is plumbed into the base to eliminate the risk of undue stress on the swivel.

Long life drive spring - Decutching arbor eliminates reverse spring winding, and torsions latch spring is virtually unbreakable. High quality spring steel is used and conditioned to insure there are no imperfections offering maximum service life.

Quality finish and corrosion resistant - Individually powder coated components along with the composite spool offers the maximum protection from premature corrosion.

	Weight	I.D.	O.D.	Length	Pressure	Outlet	Inlet				
	lbs	in	in	ft	psi	in	in				
Low Pressure Air/Water Reels					Maximum Temperature 150°F w/hose / 210°F w/ hose. **Maximum working pressure at 70°F						
RT650-OLP	27	3/8"		50	300	3/8	3/8				Includes Hose
RT835-OLP	27	1/2		35	300	1/2	1/2				Includes Hose
RT850-OLP	37	1/2		50	300	1/2	1/2				Includes Hose

Heavy Duty Spring Retractable Reel

Reelcraft's spring retractable reels incorporate the most current design and manufacturing techniques to guarantee long life and trouble-free performance. All-steel construction and a baked-on powder coat finish combine to produce a rugged, corrosion-resistant product suitable for a wide variety of heavy duty applications.

Reinforced steel - The steel guide arm and dual pedestal base are stamped with ribs and gussets and robotically welded to insure maximum strength and lightest possible weight. The unitized cast fluid path and ratchet reduce wearable parts and ease of assembly.

Full flow stress free swivel design - The full flow swivel combines the highest grade seal design and materials with bearing areas to insure maximum service life.

Long life drive spring - The unitized cast aluminum fluid path with built in decutching arbor virtually eliminates possibility of leakage and spring damage due to reverse winding. Only the highest quality spring steel is used and conditioned to insure there are no imperfections offering maximum service life.

Quality finish and corrosion resistant - Individually powder coated components offer the maximum protection from premature corrosion.



	Shipping Weight	Hose I.D.	Hose O.D.	Hose Length	** Max Pressure	NPT(M) Hose Outlet	NPT(F) Reel Inlet	Price			
	lbs	in	in	ft	psi	in	in				
Low Pressure Air/Water Reels					Maximum Temperature 150°F w/hose / 210°F w/o hose. **Maximum working pressure at 70°F						
4625 OLP	20	3/8		25	300	1/4	3/8	CALL	Includes Hose	Spring	
5650 OLP	36	3/8		50	300	1/4	3/8	CALL	Includes Hose	Spring	
7850 OLP	47	1/2		50	300	3/8	1/2	CALL	W/O Hose	Spring	
7900 OLP	44	3/4		25	300	3/4	3/4	CALL	W/O Hose	Spring	
7925 OLP-W	70	3/4		25	300	3/4	3/4	CALL	Includes Hose	Spring	
7925 OLP-WN	75	3/4		25	300	3/4	3/4	CALL	W/ Hose&Noz	Spring	
83000 OLP	77	3/4		50	300	3/4	3/4	CALL	W/O Hose	Spring	
83050 OLP-W	100	3/4		50	300	3/4	3/4	CALL	Includes Hose	Spring	
83050 OLP-WN	100	3/4		50	300	3/4	3/4	CALL	W/ Hose&Noz	Spring	
D83000 OLP	83	3/4		75	300	3/4	3/4	CALL	W/O Hose	Spring	
D83000 OLP-W	110	3/4		75	300	3/4	3/4	CALL	Includes Hose	Spring	
D83000OLPWN	110	3/4		75	300	3/4	3/4	CALL	W/ Hose&Noz	Spring	
CA33112 L	46	3/4		100	1000	3/4	3/4	CALL	W/O Hose	Manual	
CA33112 LW	75	3/4		50	1000	3/4	3/4	CALL	Includes Hose	Manual	
CA33112 LWN	75	3/4		50	1000	3/4	3/4	CALL	W/ Hose&Noz	Manual	
L4545 123 9	28	Power Cord Reel		45				CALL	Includes Cord		
L4545 123 3	27	Power Cord Reel		45				CALL	Includes Cord		